

NEW April ISSUE!

40 pages of creative *kitchens* & brilliant *bathrooms*

Decor

AUSTRALIA

Indian summer

An EXOTIC and magical home in Delhi

INSIDER'S GUIDE: SAN FRANCISCO
REMEMBERING STUART RATTLE

plus FOCUS ON beautiful bedding
the best of TOKYO DESIGNERS WEEK

APRIL 2014

\$9.95 AUST (INCL. GST)
(NZ\$10.50) 100008087



9 313006 001201

NETHERLANDS

[Villa Kogelhof]

BY PAUL DE RUITER ARCHITECTS

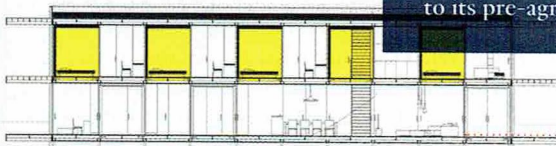


Number 1
 Congratulations
 Michael Ong,
 winner of
 the Architecture &
 Interior Design
 category of the 2013
 Qantas Spirit of
 Youth Awards.
 soya.com.au



DUTCH TREAT

This carbon neutral house by Dutch firm Paul de Ruiter Architects sits in a soon-to-be forested landscape. A glass box supported by a steel frame floats above a pond, with living quarters underground, and generates its own energy, assisted by a climate-facade and geothermal storage system. Permission was given to build on formerly protected farmlands only if the estate was returned to its pre-agricultural state, with 71,000 trees planted. paulderuiter.nl



Get into shape

It's the way forward – from *curves* and *sawtooth* rooflines to *organic contours*.



SYDNEY

HOLIDAY HOUSE

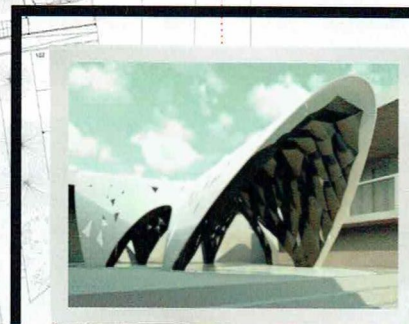
Czech architect Aleš Javurek has won the Ac-Ca international Container Vacation House competition for a sustainable house made of shipping containers overlooking Bondi Beach. The winning design (above) features a rooftop garden with panoramic views across the water, stepping down to the residential plane and then down to the pool level below. Horizontal wooden slabs supported by columns encase the containers and define the public and private living spaces. The green roof offers year-round insulation. ac-ca.org



MEXICO CITY

A CUT ABOVE

A distinctive sawtooth roofline defines Museo Jumex (above), a gallery in Mexico City housing the largest private art collection in Latin America. London firm David Chipperfield Architects worked with local studio TAAU to create the timber-clad building, fusing concrete, timber, and local travertine. The gallery showcases more than 2000 contemporary works including Jeff Koons and Cy Twombly. museojumex.org



SYDNEY
 NICE CURVES

THE SECOND 'FUGITIVE STRUCTURES', A COMPETITION BASED ON TEMPORARY BUILT DESIGNS, WILL OPEN ON MARCH 21. AR-MA HAS CREATED TRIFOLIUM, A CURVED CORIAN STRUCTURE (LEFT) TO SERVE AS A MEETING PLACE AND AUDITORIUM FOR THE SHERMAN CONTEMPORARY ART FOUNDATION, WHICH WILL BE ON DISPLAY UNTIL OCTOBER IN THE ZEN GARDEN. COMPLEMENTING IT IS THE ARCHER BREAKSPEAR-DESIGNED POLY, AN INTERACTIVE SPACE. SHERMAN-SCAF.ORG.AU

ADELAIDE



CLIMATE CONTROL

The skin of a pine cone was the inspiration for the cutting-edge facade of the South Australian Health and Medical Research Institute (above and right) designed by Woods Bagot. The transparent facade functions as a climatically controlled sunshade, housing researchers and scientists in a world-class, high-tech environment. woodsbagot.com

